



Building  
**Lifestyles**  
Building  
**Trust**

VOL. 21  
SEP-DEC 2021

**PUBLISHER** | Eupe Corporation Berhad  
5th Floor, Wisma Ria, Taman Ria, 08000 Sungai Petani,  
Kedah Darul Aman, Malaysia. | T. +604-441 4888

**PRINT AGENT** | Advation Sdn. Bhd.  
10, Jalan Teknologi 3/6C, The Core Kota Damansara,  
47810 Petaling Jaya, Selangor. | T. +603-6143 6858

# Property trust

✉ **Subscribe to the magazine**

Register at [www.eupe.com.my](http://www.eupe.com.my) to receive the latest online copy of property trust

PP 18587/03/2014 (034003)

**Est8**  
SEPUTEH

A State of Difference

## PROUDLY UNVEILING EST8 - EUPE'S THIRD KL PROJECT

A world of serenity and dreams  
Right on the doorstep of Mid Valley

Other stories in this edition:

- Handover of award-winning Parc3 project to buyers
- Helping the needy through COVID hardship
- Gold GreenRE award for Parc3's sustainable design



# MANAGING DIRECTOR'S MESSAGE

## MAKING STRIDES IN DELIVERING INNOVATIVE, CONTEMPORARY LIVING

## AT THE FOREFRONT OF URBAN SUSTAINABILITY

As the country takes cautious but optimistic steps to normality into the final months of 2021, we appreciate anew what we once took for granted.

If there has been a blessing from COVID-19, it has enabled us to see - following so much uncertainty and disruption that has marked the past two years - the joy in everyday activities and freedoms.

Well over 90 per cent of Malaysia's adult population is now fully vaccinated. This is in itself a significant achievement in such a short time.

As we continue to push forward to reopen the country's economy, there will be inevitably some road bumps and setbacks.

But we should remind ourselves that progress, no matter how small, reflects that we are a little closer to our goals than we were yesterday.

As Malaysians, we should all feel proud of working together under often trying circumstances, to bring the pandemic under control, while making sure those most vulnerable from the virus have been kept as safe as possible.

At Eupe, we are returning to normal activity as well. We continue to make strides in our expansion into the Klang Valley property market, and are pleased that progress for our projects in this region are on track.

Construction of Parc3 @ KL South, our second award-winning KL project, will be completed soon and is scheduled to be handed over in December 2021.

This represents another important milestone for Eupe as it continues to consolidate its footprint in KL.

Parc3 was built with sustainable living foremost in mind. It features the ground breaking *My Home Garden* concept - designed with a blend of extensive yet integrated landscaping and community-style gardens.

Parc3's key sustainability features, centred on Eupe's *Sustainability Plus* programme, have also recently achieved the Gold GreenRE Certification. This Gold certification acknowledges projects that display exemplary design features which are highly energy, water and resources efficient.

You can read more about Parc3's key sustainability features which have been recognised for the Gold GreenRE Certification on Page 10.



*We should remind ourselves that progress, no matter how small, reflects that we are a little closer to our goals than we were yesterday.*



## WELCOMING YOU TO A PRIVATE DREAM WORLD

In this edition of *Property Trust*, we also unveil more details about our latest project in KL.

Est8 @ Seputeh is our most ambitious project to date - designed as a private, serene haven of distinctive lifestyle difference, yet just a short walk from Mid Valley's shopping and entertaining precinct.

We're very proud with the many design innovations and facilities we've incorporated into Est8, based on our *Shared Value* philosophy, in which we commit to offering our buyers more for less.

We've collaborated with leading architectural and lifestyle designers to create an exciting lifestyle concept which merges imaginative design, lush gardens and immersive facilities.

Est8 also offers a myriad of COVID-safe features - a testament of Eupe's commitment to offering innovative yet practical homes that meet evolving needs and expectations of buyers.

Est8's Sales Gallery is now open and we warmly invite you to visit our Gallery and fully furnished show units.



Dato' Beh Huck Lee

Group Managing Director  
Eupe Corporation Berhad



# Est8

SEPUTE H

A State of Difference

WELCOME TO A  
PRIVATE DREAM  
WORLD

EUPE UNVEILS ITS  
THIRD KL PROJECT

Enter a valley of dreams and immerse yourself in a world of imagination at Eupe's latest Est8 @ Seputeh.

Est8 (pronounced 'Estate') combines the best in eco-design with premium connectedness.

A serene haven of lush trees, secluded gardens and meandering trails, with architecture and facilities inspired by creative fantasy and artistry is Est8's iconic design signature - all located a short walking distance to Mid Valley City via a covered walkway.

Covered walkway to  
Mid Valley &  
LRT / KTM Station

Est8  
SEPUTE H  
A State of Difference

KL  
SENTRAL

KL  
TOWER

KLCC

PNB  
118

KL ECO  
CITY

MID VALLEY  
CITY



Kaleidoscope Kitchen



Est8's stylish façade is inspired by Eupe's commitment to develop innovative and iconic, urban design.

A DREAM WORLD  
BROUGHT TO LIFE IN  
YOUR OWN HOME

Eupe's latest landmark project in Kuala Lumpur, Est8 @ Seputeh, has been carefully crafted as a private, serene enclave in one of the city's most-sought after precincts.

Conceptualised to offer residents a state of difference, each and every part of the development has been meticulously planned to give residents an immersive living experience.

Connected via a covered walkway directly to Mid Valley, Est8 combines serenity and security with the best in KL's retail, leisure and recreational conveniences just a short walk away.



# IMMERSIVE FACILITIES

Est8 offers over 40 facilities that make a bold architectural statement while raising everyday living to new heights. Driven by Eupé's award-winning design approach, the facilities are planned around three distinctive enclaves.

- Entertain and host in the luxurious **Kaleidoscope Kitchen** - an exclusive space inspired by vibrant, multi-faceted kaleidoscopic views. Enhance your culinary experience with expansive views of the city skyline across the distance.
- Take outdoor dining to a new level in this dream-like enclave, where giant dandelions glitter amid prisms of coloured glasses in the spacious **Kaleidoscope Courtyard**.
- Invite your loved ones for an adventure in the **Grand Burrow**, a multipurpose hall designed as a cavern to bring a sense of wonder for every occasion. The hall can be reconfigured into cosier spaces for smaller gatherings.
- Fuel creative pursuits and let your imagination run wild in the **Secret Burrows** - a business centre designed as a series of burrows for quiet thinking and concentration, equipped with the latest in office technology.
- **Bubble Dome** - Est8's state-of-the-art gymnasium that boasts cardio, strength and stretch zones, set to be KL's most innovative gym space designed for inspiring workouts.



Bubble Dome



Grand Burrow



Paradise Blue

# GREENSCAPES THAT OFFER A TRANQUIL RESPITE

We have crafted gardens within Est8 that celebrate community togetherness and nurture serenity and imagination.

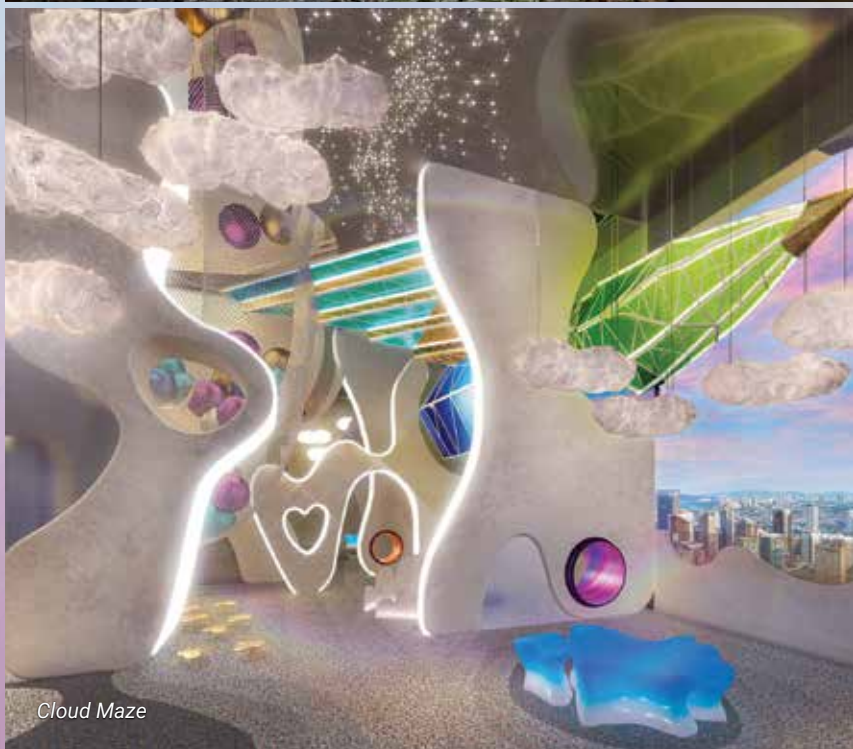
Gardens that are not only pleasing to the eye; they are painstakingly designed to be functional spaces that elevate your physical and mental well-being to new heights.

- Transport yourself into a surreal dreamscape of lush trees and dandelions in the **Floating Garden**, a space inspired by the beauty of tropical rainforests that will uplift your mood.
- Elevate your sense of adventure to new heights at Est8's **Cloud Maze**, a playground for your imagination – for the young and young at heart.
- Unwind from the mundane mix of routines and feel on top of the world at the iconic **Flutter Meadow**, where dandelions grow and butterflies emerge from their cocoons to complement your al-fresco sky dining experience.
- Dive into the depths of your imagination - play with the jellyfishes, get lost in the coral maze, explore the undersea caves and the mysteries of oceans deep in **Paradise Blue**, a playground of azure wonder.
- Get active in the **Garden of Giants** - a sky garden dedicated for vigorous workouts that celebrate all things larger than life, where giant mushrooms stand as sentinels, and dandelions soar above.

Est8 lets you return home to a place designed to elevate you above the rush of city life, uplift your senses and spark your imagination - without leaving the confines of your own home.



Floating Garden



Cloud Maze



# COME DREAM WITH US. OUR SALES GALLERY IS OFFICIALLY OPEN



## Est8 Sales Gallery

No. 21, Jalan Pantai Baharu, Bangsar South, 59100 Kuala Lumpur.

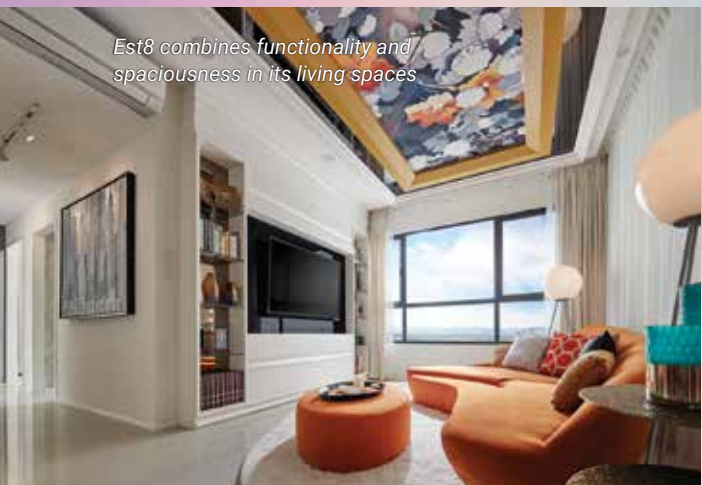
For an exclusive experience of Est8's artistic vision, visit us at the newly opened Est8 @ Seputeh Sales Gallery.

We are open daily from 10am to 6pm. Viewing is available by appointment only, please call or text us to request for a personalised tour.

+6017-275 7188



Est8 combines functionality and spaciousness in its living spaces



Spacious master bedroom in Est8's duplex show unit



# Est8

SEPUTEh

A State of Difference

## FEATURED IN THE EDGE

Est8 @ Seputeh - Eupe's latest KL project – has been featured in The Edge, Malaysia's leading business and property publication.

The two-page feature highlighted Eupe's unveiling of Est8, while showcasing its premium design features, facilities and sky gardens that are at the heart of the iconic, new project.

Speaking to The Edge, Dato' Beh Huck Lee said Est8's name was inspired by a vision for creating a tranquil estate in the heart of the city, defined by unique lifestyle offering. Est8's design has been inspired by imagination, fantasy and fairy tales to elevate the state of mind of Est8's homeowners to a sense of calm, tranquillity and peace.

The article highlighted the project's premium location, close to KL city centre and a short walk via covered walkway to Mid Valley Megamall. Also highlighted were Est8's special design features to maximise the flows of healthy air within Est8 and minimise the spread of COVID-19.

The article appears in both print and in The Edge's popular website.

You can read the full article by visiting Eupe's website at: <https://eupe.com.my/eupe-in-the-media>.



Eupe's two-page special feature in The Edge Malaysia





# PARC3 AGAIN RECOGNISED FOR ITS GREEN CREDENTIALS

Eupe's commitment to 'green' living was again highlighted when its second KL project - Parc3 @ KL South – was recently featured in The Edge City & Country for being awarded the Gold GreenRE award.

The award is one of the top two certifications given by GreenRE Sdn Bhd - Malaysia's leading green building certification body and is based on internationally recognised best practice for building eco-design.

Sustainable living and energy efficiency are key features of the masterplan used to design and construct Parc3 which is due for completion at the end of the year.

Parc3's internal structure has been designed to maximise the flow of air into the building which then naturally cools the building, unlike standard ventilation in high-rise buildings where air is static.

The design and orientation of Parc3 also means no part of the façade is directly facing west, minimising the amount of heat entering the building.

Lighting in the common areas, such as staircases, lobbies and corridors, have also been equipped with energy efficient lighting fixtures which can save nearly 25% in total electricity usage.

Parc3 homeowners will enjoy additional energy savings with all units' air-conditioners having the highest 5-star energy efficiency. Water fittings have been certified under the Water Efficiency Labelling Scheme and the Water Efficiency Product Labelling Scheme which can save up to 29% in water usage.

Low volatile organic compound paint and tiles have also been used for all internal and external walls to further enhance a healthy indoor environment for Parc3's residents.

This GreenRE certification adds to the growing list of accolades that underline Eupe's commitment to giving its home buyers the best in sustainable urban residential design.

In May this year, Parc3 won iProperty's prestigious Best Sustainable High-Rise Development award.



# EUPE HANDS OVER ITS SECOND AWARD- WINNING PROJECT TO BUYERS

Winner of the Best Sustainable High-Rise Development for the 2021 iProperty Development Excellence Awards and Highly Commended for the Best Landscape Architectural Design Category in the 2019 Propertyguru Asia Property Awards - Parc3 @ KL South is now being handed over to its homeowners.

Overlooking the 64-acre Taman Pudu Ulu public park and designed around three internal sky parks, it is a blend of iconic design and sustainable green living in one of KL's emerging precincts.

Parc3 homeowners were given a comprehensive tour of the project's innovative lifestyle offering, including the cascading waterfalls of Parc3's Central Park, the refreshing pool deck, underneath the cavernous ceilings of the Sky Park, the lavish luxury of the Celebrity Kitchen and on the top-floor, the Moonlight Deck, majestically overlooking the KL city skyline.

Parc3 also features "My Home Garden", a community-style garden where homeowners can grow their own organic food. It's been designed to also foster community and family relationships via its curated spaces and communal gardens. All herbs and plants are labelled with QR codes for easy identification when scanned.

Congratulations again to all Parc3 homeowners and we wish you many years of happiness and comfort.

Actual progress photo (November 2021)



Parc3 featured alongside other GreenRE certified developments





Parc3's 50-metre pool

Views of the KL city skyline from the Moonlight Deck.



## Instagram Parc3 Photo Contest

To all Parc3 homeowners, thank you for choosing Parc3! As a further appreciation of you placing your trust in us, Eupe is giving you a chance to win an **iPhone 13 Pro Max 256GB** Monthly cash prizes And more!



### STEP 1



Take a photo of anywhere in Parc3 and post it on Instagram

### STEP 2



Caption your photo on "Why you love Parc3?" Add #parc3 and @eupecorpbhd

### STEP 3



Follow us on Instagram @eupecorpbhd

- Win with the best visual capture and most creative photo and caption.
- Multiple entries allowed (1 post = 1 entry).
- Contest ends 31 March 2022.
- Contest limited to owners of Parc3.

Scan for official contest rules:



tiny.cc/ashotintheperc



## EXCEEDING BUYER EXPECTATIONS

With Parc3 @ KL South in the midst of its handover to buyers, we spoke to proud Parc3 homeowners Jonathan Teo and his wife, Stacey Fredericks, on what sets Parc3 apart and how their new home has exceeded their expectations.

### So let's start off with some "get to know" you questions. Where are you from?

I'm from Kuching and my wife is from Johor Bahru.

### And what do you do for a living?

I'm an engineering consultant in the construction industry while Stacey works as a life planner.

### Where do you think you'll be spending most of your time in your new home?

Most of the time I'll be chilling in the living room watching TV while my wife will be in the kitchen cooking up a storm.

### What's the last thing you bought for your new home?

An ultra-comfortable mattress.

### Now some questions about Parc3. On a scale from 1 to 10, how satisfied are you with your purchase of Parc3?

8

### Why did you purchase a unit in Parc3?

The location was the main attraction for us. It's close to many amenities like schools, public transport and shopping malls, yet has this amazing park located right at its doorstep. The whole concept of Parc3 which focuses on quality living also attracted us. We like the emphasis on greenery, good air circulation and residence-focused designs.

Jonathan and his wife Stacey – proud owners of Parc3



### Any other reasons?

When I first purchased this unit, I thought it would be a great first home where I could come back to relax after a long day at work. I wanted a place that embodied peacefulness. Then Stacey, who was my then girlfriend, convinced me this was the right place to start the next stage of our lives.

### What are some of your favourite Parc3 features?

The 50-metre infinity pool, Celebrity Kitchen, Sky Park on Levels 23 and 27, the rooftop garden - Moonlight Deck, the "My Home Garden" concept, Taman Pudu Ulu Recreation Park, accessibility to public transport and malls nearby like Sunway Velocity, Aeon, Ikea and MyTown.

### In your opinion, what makes Parc3 different from other developments?

Within the vicinity, there are no other properties that have the same balance of living quality and price.

### Would you recommend Parc3 to other buyers? And do you think Parc3 is worth what you paid for?

Yes and yes.

### Is there anything you'd like to say to future purchasers of Eupe projects?

If you're planning to get a Eupe property, from our experience so far, they have delivered above our expectations. The quality and the overall purchasing experience have been very smooth and even the artistic impressions are close to the final product. Kudos to the Eupe team for always thinking out of the box and giving us homeowners a wonderful experience.

Stay connected to our social media for the upcoming video interview.



# SUPPORTING COMMUNITIES THROUGH EUPE'S FOOD AID PROGRAMME

Dedicated to support communities affected by the COVID-19 pandemic, Eupe remains committed to assist those who had lost income and other support during this critical period.

Eupe has partnered with two charity organisations – The Lost Food Project and Food Aid Foundation, to distribute food packs to those most in need in KL.

These included residents from the Program Perumahan Rakyat (PPR) Kerinchi who were undergoing home quarantine, as well as underprivileged families from Union Flat Sentul and abused mothers.

The assistance is part of Eupe's *Building Hope* programme which seeks to build and support more sustainable, inclusive communities.

A total of 100 food packs were distributed through this food aid programme.



The food packs comprised essential necessities such as rice and non-perishable food items.



This initiative helped to support especially those affected due to loss of income during the Movement Control Order.



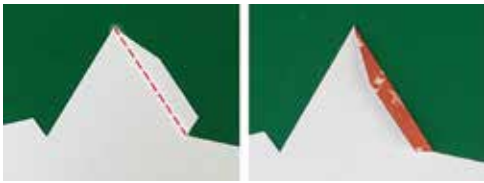
## WHEN YOU WISH UPON YOUR STAR

Missing a star to top your Christmas tree? Looking for a fancy 3D decoration? We've got you covered! Here's the easiest DIY star you can make this Christmas.

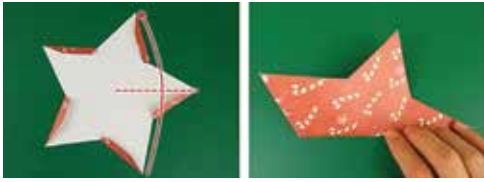
**Materials:**  
We've made this one so easy you just need a pair of scissors and glue.

**Instructions:**

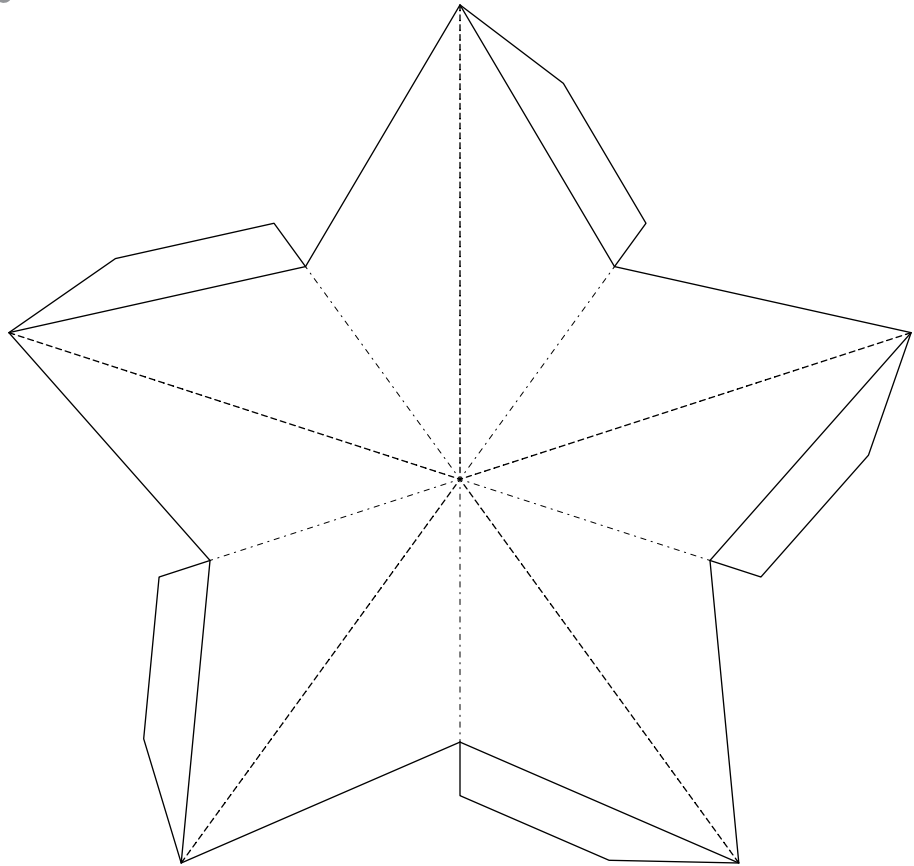
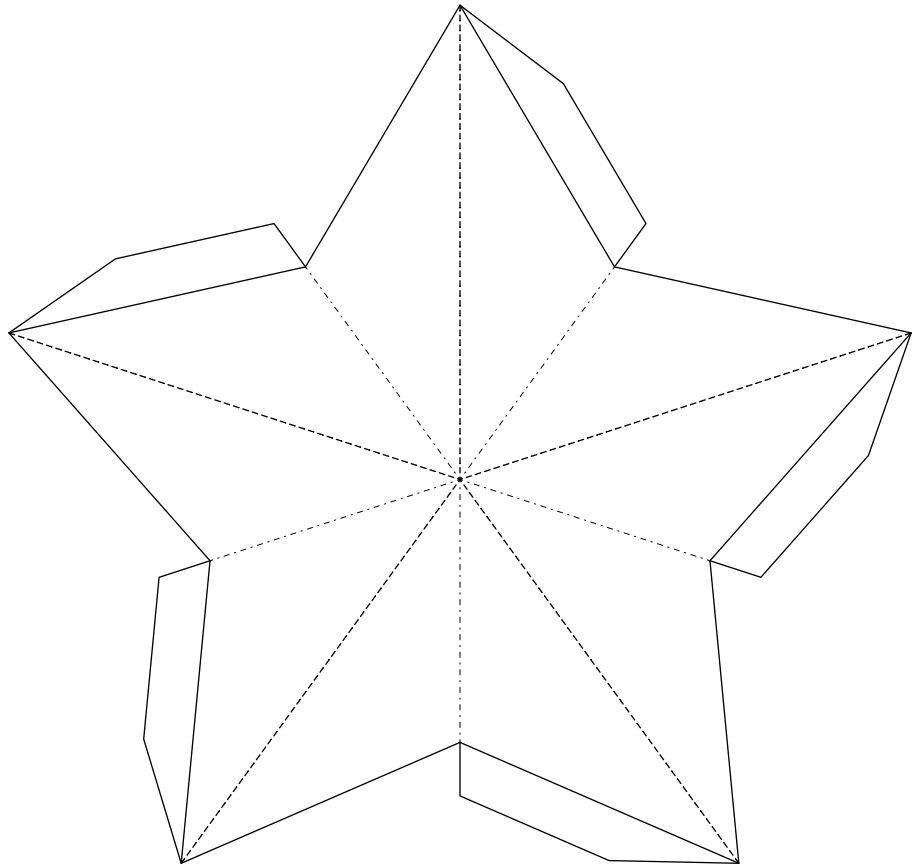
- 1 Cut out the 2 stars we've printed on this page.



- 2 Fold all 5 of the tabs at the edge of each star.



- 3 Place the blank side up and fold along the dotted lines for each tip of the star. Do this for both stars.







4

Unfold the tabs and put glue on them.



5

Put one star on top of the other - the white side facing inwards and then press the star flat, especially around the edges.



6

To make the star into a 3D shape, just gently squeeze the bottom of each of the arms of the star. For visual learners, here's a video on how to make your star 3D:

<https://youtu.be/s8W8jT9GrGk>

If you'd like to print your own to cut or trace on other recyclable paper lying around, here are some print out templates you can use in 3 different sizes: <http://bit.ly/pt21startemplate>

#### Source:

#### Homemade Gifts Made Easy

<https://www.homemade-gifts-made-easy.com/making-christmas-decorations.html>



# Davinea

Rumah Banglo Setingkat

Luas tanah: **60'x90'**

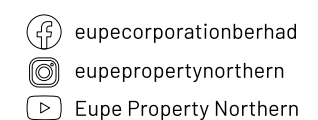
Luas binaan: **33.5'x52.5'**

- Kawasan berpagar dan berpengawal.
- Siling volum berganda menggalakkan pengudaraan yang baik.
- Ruang makan yang membuka ke taman.
- 4 bilik tidur 3 bilik air untuk keluarga yang sedang membesar.
- Akses ke taman dari belakang rumah.

## HAK MILIK KEKAL



+6013-4411 858  
eupe.com.my



A project by: **EUPE KEMAJUAN SDN BHD** (150839-X) A Wholly Owned Subsidiary of **EUPE CORPORATION BERHAD** (377762-V)

Pemaju: Eupe Kemajuan S/B • Tingkat 5, Wisma Ria, Sg Petani • No. Lesen: 3828-30/05-2022/02103(L) • Tempoh Sah: 31/05/2021-30/05/2022 • No. Permit Iklan & Jualan: 3828-30/05-2022/02103(P) • Tempoh Sah: 31/05/2021-30/05/2022 • No. Rujukan: Bil (16) dlm.MPSPK (IP) B.8/2020/C/RKM • Projek perumahan 6 unit rumah sesebuah setingkat berharga Min. RM75,016 Max. RM77,272 • Dijangka siap 2022 • Pelan diluluskan: MPSP • Jenis hak milik: FREEHOLD • Bebanan tanah: Tiada  
 Pemaju: Eupe Kemajuan S/B • Tingkat 5, Wisma Ria, Sg Petani • No. Lesen: 3828-35/09-2022/0600(L) • Tempoh Sah: 08/09/2020-07/09/2022 • No. Permit Iklan & Jualan: 3828-35/09-2022/0600(P) • Tempoh Sah: 28/03/2020-27/03/2022 • No. Rujukan: Bil (16) dlm.MPSPK (IP) B.8/2020/C/RKM • Projek perumahan 7 unit rumah sesebuah setingkat berharga Min. RM636,000 Max. RM707,272 • Dijangka siap 2022 • Pelan diluluskan: MPSP • Jenis hak milik: FREEHOLD • Bebanan tanah: Tiada  
 Pemaju: Eupe Kemajuan S/B • Tingkat 5, Wisma Ria, Sg Petani • No. Lesen: 3828-38/05-2023/0444(L) • Tempoh Sah: 19/05/2021-18/05/2023 • No. Permit Iklan & Jualan: 3828-38/05-2023/0444(P) • Tempoh Sah: 19/05/2021-18/05/2023 • No. Rujukan: Bil (16) dlm.MPSPK (IP) B.8/2020/C/RKM • Projek perumahan 7 unit rumah sesebuah setingkat berharga Min. RM646,560 Max. RM671,560 • Dijangka siap 2023 • Pelan diluluskan: MPSP • Jenis hak milik: FREEHOLD • Bebanan tanah: Tiada  
 Pemaju: Eupe Kemajuan S/B • Tingkat 5, Wisma Ria, Sg Petani • No. Lesen: 3828-40/06-2023/0505(L) • Tempoh Sah: 04/06/2021-03/06/2023 • No. Permit Iklan & Jualan: 3828-40/06-2023/0505(P) • Tempoh Sah: 04/06/2021-03/06/2023 • No. Rujukan: Bil (16) dlm.MPSPK (IP) B.8/2020/C/RKM • Projek perumahan 6 unit rumah sesebuah setingkat berharga Min. RM646,560 Max. RM671,560 • Dijangka siap 2023 • Pelan diluluskan: MPSP • Jenis hak milik: FREEHOLD • Bebanan tanah: Tiada



MEET THE PEOPLE  
BEHIND EUPE

What are your roles and responsibilities in Eupe? How long have you been working here?

I'm a Human Resource and Administrative Executive in the Human Resource Department in Eupe's Klang Valley head office. I've been working in Eupe for one year. My role is overall office support and human resource administrative duties.

What do you like about working in HR?

I love working in HR because I'm a person who likes helping colleagues who are in need and also someone who's available as a listener. HR plays an important role in the office – to always be there for people who need support, whether regarding personal or work-related matters. My lips are sealed and I'll keep it confidential.

What do you do to relax?

I listen to music a lot, especially oldies music and jazz. I sometimes play the piano or wander around with my film camera to take street photography.

If you could go back in time to change one thing, what would you do?

I have to disappoint you but there's nothing I would change if I had a time machine because I have no regrets towards my past - those were golden experiences. To me, I believe everyone's past is a message of the challenges we had to overcome in order to become better people.

Name the oddest thing you've ever bought online.

A nose lifting clip. I was 19 or 20 when I saw a commercial that advertised a clip that promised to lift and contour your nose because I have a flat and big nose. All I got were very big, red and ugly bruises.

Now that the borders are open, what would be your first holiday destination?

Definitely Japan! I miss shopping, snowboarding, and Disneyland. Also, if I were given an all-expense paid holiday, I'd go to Europe! Art museums are expensive. I want to visit all the art museums in Europe because I love art! Two of my favourite painters are Claude Monet and Henri Matisse. Interactive arts are also among my favourites.

Is there anything you're grateful for in 2021?

I'm very grateful that the people around me are healthy and safe despite the pandemic.

What are you hoping for in 2022?

No wrinkles on my face. That my loved ones always stay healthy, happy and safe.



Ashley Ng

Human Resource and Administrative Executive



The Cinta Sayang Resort team is ready to welcome you back.



WELCOMING  
YOU BACK WITH  
ENHANCED HYGIENE  
PROTOCOLS

As the world opens up again, customer experience at Eupe's Cinta Sayang Resort in Sungai Petani is focused strongly on COVID safety and protection.

First and foremost, Cinta Sayang Resort is proud to share that our entire team is fully vaccinated.

All of Cinta Sayang Resort's hospitality practices have been reviewed and robust safety protocols have been executed to protect guest health and safety.

Our COVID-safe measures include social distancing within hotel perimeters, heightened sanitisation measures especially at common areas, increased hand sanitisation stations and pre-packed food packets.

At the food and beverage 'buffet' stations in our restaurant, individually plated and served meals as well as "grab-and-go" options have been adopted and communal use of food utensils minimised.

As we continue to adopt even more safe measures to cater for our guests, Cinta Sayang Resort remains dedicated to focus on providing the best hospitality experience.

Do visit us for a well-deserved (and COVID-safe) retreat!

Enhanced sanitisation measures have been put in place.





# Est8

SEPUTEH

A State of Difference

Award-winning design  
& affordable luxury with  
Mid-Valley on your doorstep

An Iconic Location  
with a Covered  
Walkway to  
Mid Valley City

Est8 @ Seputeh is the latest residential project by award-winning developer Eupe Corporation Berhad.

Designed to offer the best in **style, success, serenity and security**, Est8 is a sanctuary where you can mentally and physically retreat from the buzz of the city into a place defined by magic and imagination - all within a **short walking distance to Mid Valley City** via a **covered walkway**.

KL ECO CITY

MID VALLEY CITY

Covered walkway to  
Mid Valley &  
LRT / KTM Station

Est8  
SEPUTEH  
A State of Difference

**THE SALES GALLERY IS NOW OPEN FOR VIEWING**  
Contact us now for a personalised tour



est8.com.my

+6017-275 7188

Est8 by Eupe  
 Est8 Sales Gallery

Another exciting project by: **EUPE CORPORATION BERHAD** (377762-V) | Under its subsidiary: **TITIAN SAMA SDN BHD** (957887-P)

**HEADQUARTERS** 5th Floor, Wisma Ria, Taman Ria, 08000 Sungai Petani, Kedah Darul Aman, Malaysia. T.+604-441 4888 F.+604-425 1152  
**KLANG VALLEY OFFICE** D-26-01, Menara Mitraland, No. 13A, Jalan PUJ 5/1, Kota Damansara PUJ 5, 47810 Petaling Jaya, Selangor, Malaysia. T.+603-7610 0636 (GL) F.+603-7610 0651/52

Nama Pemaju: Titian Sama Sdn Bhd • Alamat Pemaju: D-26-1 Menara Mitraland, No. 13A, Jalan PUJ 5/1, Kota Damansara PUJ 5, 47810 Petaling Jaya, Selangor D.E. • No. Telefon: +603-7610 0636 • Nombor Lesen Pemaju: 19122-2/07-2023/0580 (L) • Tempoh Sah Laku: 23/07/2021 - 22/07/2023 • Nombor Permit Iklan dan Jualan: 19122-2/07-2023/0580 (P) • Tempoh Sah Laku: 23/07/2021 - 22/07/2023 • Jenis Pegangan Tanah: Pajak 99 Tahun (berakhir pada 26 Februari 2118) • Sekatan-sekatan kepentingan: Tanah ini tidak boleh dipindahmilik, dipajak atau digadai tanpa kebenaran Jawatankuasa Kerja Tanah Wilayah Persekutuan Kuala Lumpur • Beban Tanah: Maybank • Nama Pemaju Perumahan: Residensi Estetik 8 (EST8) • Tarikh Dijangka Siap: Jun 2024 • Jenis Rumah: Pangsapuri Suite dan villa • Bilangan Unit: Blok A-432 unit; Blok B-372 unit; Blok C-17 unit • Luas Binaan: Blok A 543 kps (min) - 1,947 kps (maks); Blok B 543 kps (min) - 1,947 kps (maks); Blok C 966 kps (min) - 1,184 kps (maks) • Harga Jualan: Blok A RM573,600 (min) - RM1,743,600 (maks); Blok B RM637,200 (min) - RM1,946,400 (maks); Blok C RM1,099,200 (min) - RM1,228,800 (maks) • Nama PBT yang meluluskan pelan kepada DEWAN BANDARAYA KUALA LUMPUR • No. Rujukan: BP S1 OSC 2020 0833 • IKLAN INI TELAH DILULUSKAN OLEH JABATAN PERUMAHAN NEGARA

The information contained herein is subject to change and cannot form part of an offer or contract. All measurements are approximate. While every reasonable care has been taken to prepare this brochure, the developer cannot be held responsible for any inaccuracy. All items are subject to variations, modifications and substitutions as maybe required by the authorities or recommended by architect or engineer.