

cinta sayang
Resort
Villas

Expect the
Exceptional

2.5 Storey Contemporary Bungalows

Extraordinarily crafted

As a multi-award winning developer, Eupe excels at creating more value with each property it designs – so we share more value with our buyers.

Our Shared Value approach is infused into every aspect of CSRV2.

So expect...



Expansive space for flexible living



A secure community enclosed with perimeter fence



Cross ventilation for optimal airflow



Exclusive privacy within the community and home



Roof terrace dining beneath the stars



A private balcony cabana to relax and unwind




Dining terraces connected to kitchens for entertaining



Iconic curved roofs and rounded edges characterise the development and give the design its personality. The softened edges result in an organic form that creates a visually appealing and distinct streetscape.

Security Checkpoint



An aerial night view of a modern residential building. The focus is on a rooftop terrace of a boutique bungalow. The terrace is furnished with a grey sofa, a dining table with chairs, and a glass-enclosed structure. The building has a curved roof and large windows, some of which are illuminated from within. The scene is set against a dark sky, with decorative orange and green geometric shapes overlaid on the image.

*Every detail crafted for
exceptional living*

Embrace the Difference

Welcome home to an exclusive neighbourhood. Where distinctive design exceeds your expectations.

Raise your lifestyle to new heights with spacious 2 and a half storey boutique bungalows.

Sleek, curved roofs crown the stylish, contemporary architecture of each home – together with a roof terrace to host memorable gatherings.

Inside, ceilings are raised to create luxurious, vertical spaces that exuberantly exude light and air.

All part of a perfectly crafted community enclosed in 6.5 acres of private greenery.

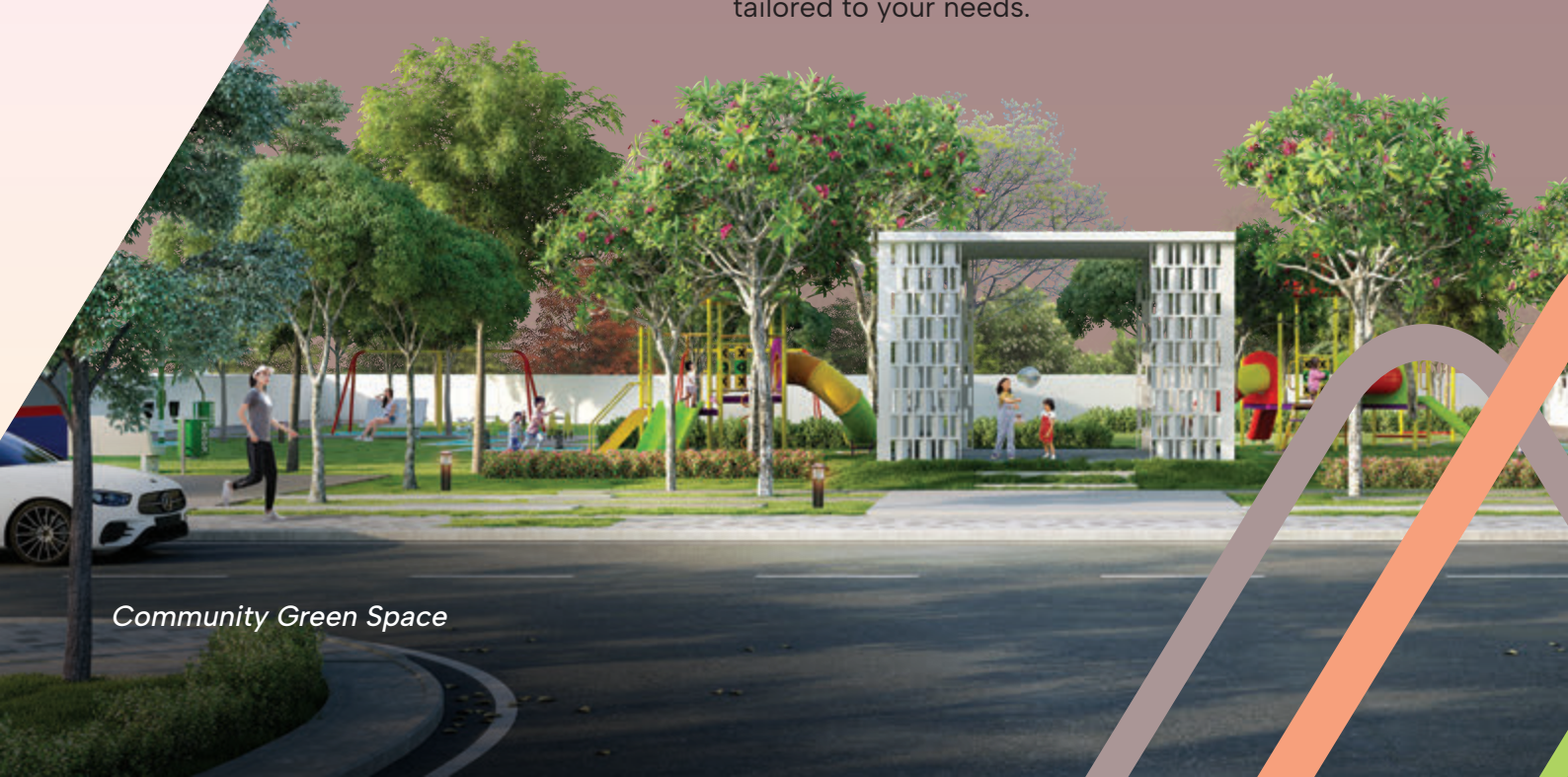
Made For Exceptional, Natural Living

Experience the outdoors from the heart of your home.

Abundant windows connect you with gardens and natural daylight for a seamless living experience.

The spacious open plan of each home means every room can be tailored to your needs.

Community Green Space



TYPE

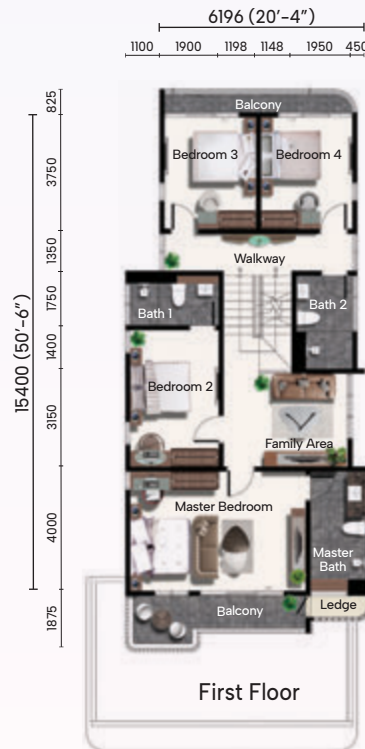
A

Land Size: 40' x 90' (3,638 sf.)
Built-up: 25' x 50' (2,900 sf.)

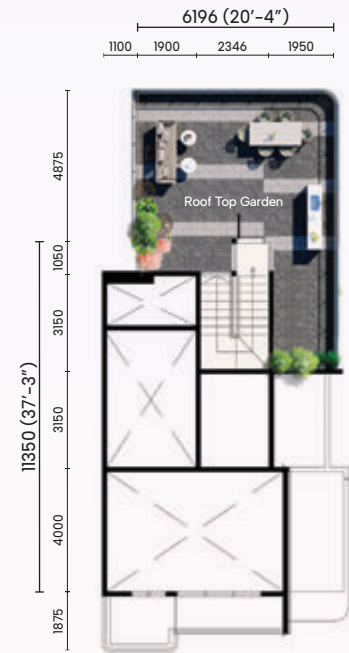
4+1 Bedrooms & 4 Bathrooms



Ground Floor



First Floor



Second Floor



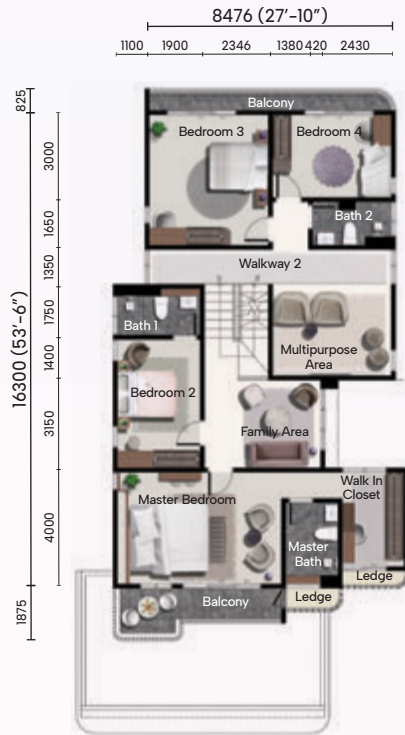
TYPE B

Land Size: 47' x 90' (4,316 sf.)
Built-up: 33' x 54' (3,856 sf.)

5+1 Bedrooms & 4+1 Bathrooms



Ground Floor



First Floor



Second Floor

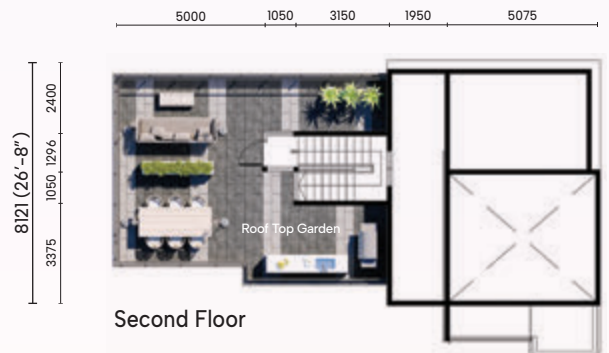


TYPE

C

Land Size: 64' x 70' (5,909 sf.)
Built-up: 26' x 54' (3,199 sf.)

4+1 Bedrooms & 4 Bathrooms



Exclusive Neighborhood

A 6.5 acre development with only 41 units, offering a rare low-density environment.



cinta sayang
Resort Villas



 Cinta Sayang Resort Villas

The latest project by award-winning developer Eupe Corporation Berhad



The Edge - Highest Growth in Profit After Tax Over Three Years (Property)



The Edge - Top 30 Developers in Malaysia 2020 - 2023



Star - FIABCI Rising Star Award



The Edge - PEPS Value Creation Excellence Award 2021 (Non-Residential)



FIABCI World Prix - World Gold Winner Residential High Rise



FIABCI Malaysia - Winner Residential High Rise



+6013-4411 858
+604-441 4888

 eupecorporationberhad
 eupepropertynorthern



A Project by: **EUPE CORPORATION BERHAD** 199601005416 (377762-V) | Under its subsidiary: **EUPE KEMAJUAN SDN BHD** 198601001697 (150839-X)

NORTHERN OFFICE 5th Floor, Wisma Ria, Taman Ria, 08000 Sungai Petani, Kedah Darul Aman, Malaysia. T. +604-441 4888 F. +604-425 1152

KLANG VALLEY OFFICE D-26-01, Menara Mitraland, No.13A, Jalan PJJU 5/1, Kota Damansara PJJU 5, 47810 Petaling Jaya, Selangor, Malaysia. T. +603-7610 0636 (GL) F. +603-7610 0651/52

Pemaju: Eupe Kemajuan Sdn Bhd • Tingkat 5, Wisma Ria, Sg Petani • No. Lesen: 3828/03-2029/0137(A) • Tempoh Sah: 26/03/2024 - 25/03/2029 • No Permit Iklan & Jualan: 3828-53/10-2026/0906(N)-L • Tempoh Sah: 8/10/2024 - 7/10/2026 • No Rujukan: MPSPK(PJB.200/2022 D RKM • Projek Perumahan 41 unit rumah sesebuah 2 tingkat berharga Min.RM1,207,500 - Maks.RM1,817,000 • Dijangka Siap: Oktober 2026 • Pelan diluluskan: MPSP • Jenis hak milik: Hak Milik Kekal • Bebanan tanah: Tiada

The information contained herein is subject to change and cannot form part of an offer or contract. All measurements are approximate. While every reasonable care has been taken to prepare this material, the developer cannot be held responsible for any inaccuracy. All items are subject to variations, modifications and substitutions as maybe required by the authorities or recommended by architect or engineer.

eupe.com.my